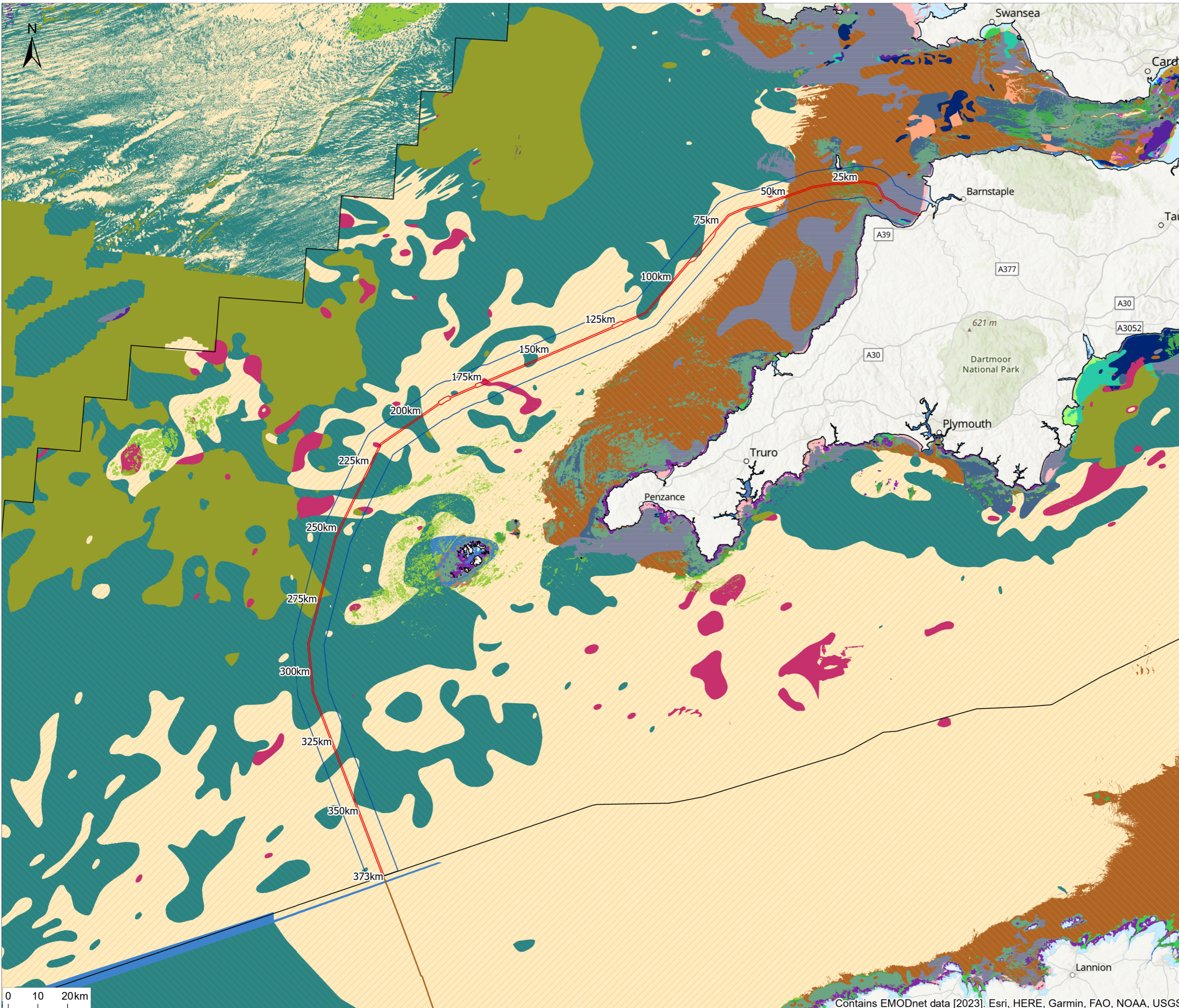


\\Corplink\Cloud\UK-GIS\01\data\70107275 - Xlinks\132_GISS\132_GISS\ArcGIS\Pro\Projects\Benthic Ecology\794+PLN-ESH-00031 - 1 - EU Sea Map (2023).aprx



Notes
 1. This plan is scaled at paper size A3. If received electronically it is the recipient's responsibility to print to the correct scale. Only written dimensions should be used.

Legend

- Xlinks UK Offshore Cable Corridor
- Indicative Cable Centreline
- Benthic Ecology Study Area (5km)
- UK Exclusive Economic Zone (EEZ)

EU Sea Map 2023 (EUNIS Code)

<ul style="list-style-type: none"> A3: Infralittoral rock and other hard substrata A3.1: Atlantic and Mediterranean high energy infralittoral rock A3.2: Atlantic and Mediterranean moderate energy infralittoral rock A3.3: Atlantic and Mediterranean low energy infralittoral rock A4: Circalittoral rock and other hard substrata 	<ul style="list-style-type: none"> A4.1: Atlantic and Mediterranean high energy circalittoral rock A4.2: Atlantic and Mediterranean moderate energy circalittoral rock A4.3: Atlantic and Mediterranean low energy circalittoral rock A4.12: Sponge communities on deep circalittoral rock A4.27 or A4.33: Sponge communities on deep circalittoral rock or Faunal communities on deep moderate energy circalittoral rock or Faunal communities on deep low energy circalittoral rock A4.27: Faunal communities on deep moderate energy circalittoral rock 	<ul style="list-style-type: none"> A4.33: Faunal communities on deep low energy circalittoral rock A5: Sublittoral sediment A5.6: Sublittoral biogenic reefs A5.13: Infralittoral coarse sediment A5.14: Circalittoral coarse sediment A5.15: Deep coarse sediment A5.23 or A5.24: Infralittoral fine sand or Infralittoral muddy sand A5.25 or A5.26: Circalittoral fine sand or Circalittoral muddy sand A5.27: Deep circalittoral sand A5.33: Infralittoral sandy mud A5.34: Infralittoral fine mud A5.35: Circalittoral sandy mud A5.36: Circalittoral fine mud A5.37: Deep circalittoral mud 	<ul style="list-style-type: none"> A5.43: Infralittoral mixed sediments A5.44: Circalittoral mixed sediments A5.45: Deep circalittoral mixed sediments A5.61: Sublittoral polychaete worm reefs on sediment A5.435: Oyster beds on shallow sublittoral muddy mixed sediment A5.611: [Sabellaria spinulosa] on stable circalittoral mixed sediment A5.612: Sabellaria alveolata on variable salinity sublittoral mixed sediment A5.625: [Mytilus edulis] beds on sublittoral sediment Na
--	--	---	--

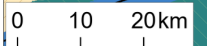


Rev	Description	By	CB	Date
P01	Final	CE/NK	TM	04/04/24



Client: Xlinks 1 Limited
 Project: Xlinks Morocco-UK Power Project
 Title: EU Sea Map (2023)

Status: FINAL
 Drawn By: CE/NK
 PM/Checked By: TM
 Project Number: 794-PLN-ESH-00031
 Scale @ A3: 1:1,200,000
 Date Created: Apr 2024
 Figure Number: 1.2
 Rev: P01



Contains EMODnet data [2023]. Esri, HERE, Garmin, FAO, NOAA, USGS