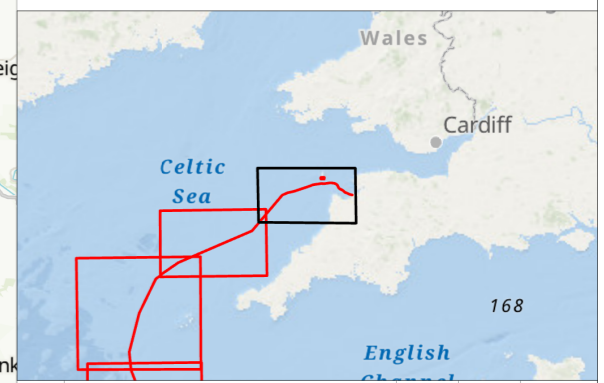
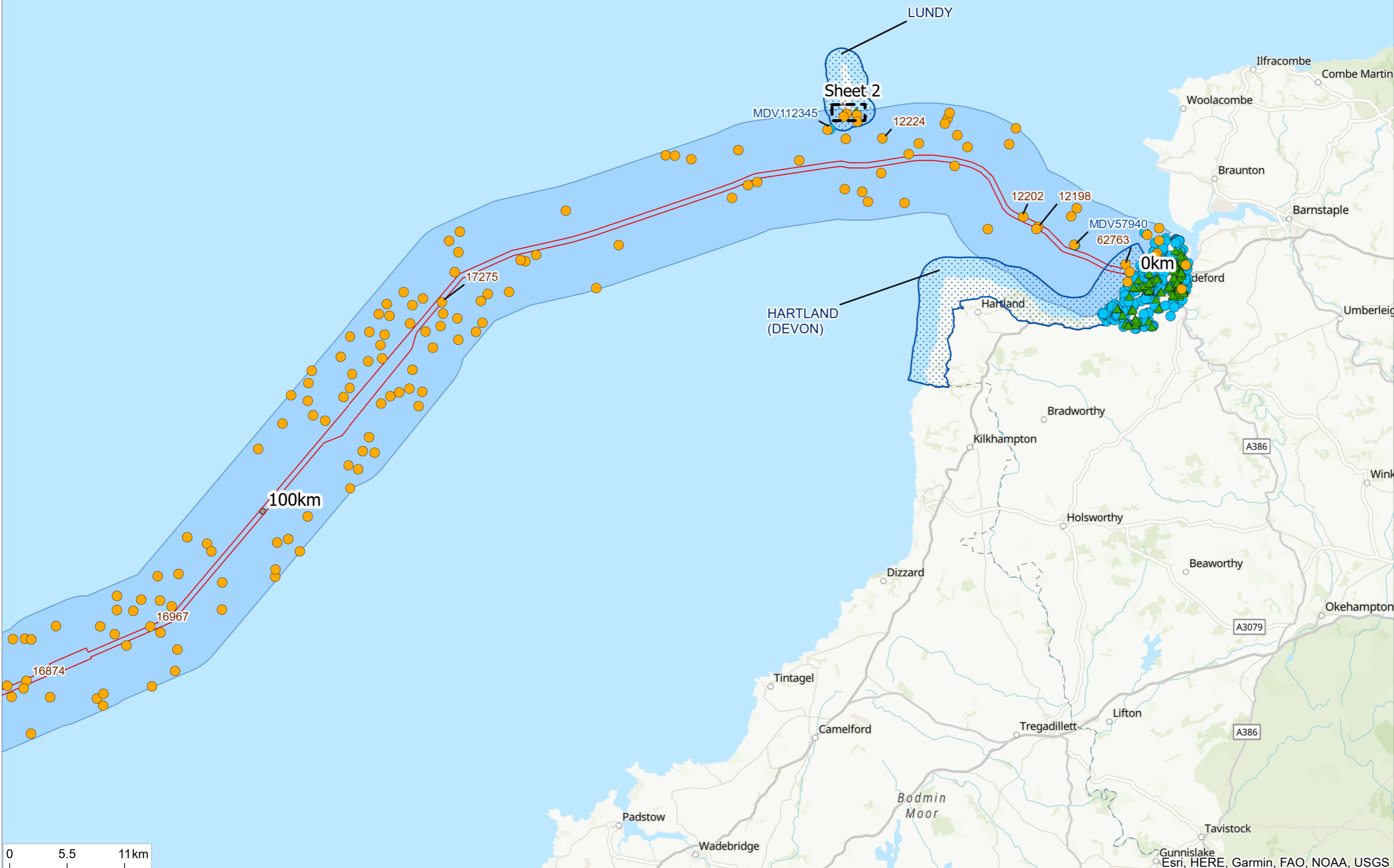




Notes
 1. This plan is scaled at paper size A3. If received electronically it is the recipient's responsibility to print to the correct scale. Only written dimensions should be used.

Legend

- Xlinks UK Offshore Cable Corridor
- 5km Study Area
- UKHO - Wrecks or Obstructions
- ▲ Listed Buildings
- DHER Monument (point)
- Heritage Coasts



Rev	Description	By	CB	Date
P01	Final	CE	JC	04/04/24



Client Xlinks 1 Limited

Project Xlinks Morocco-UK Power Project

Title Historical Environment Features map
Sheet 1 of 5

Status **FINAL** Drawn By **CE** PM/Checked By **TM**

Project Number 794-PLN-ESH-00051 Scale @ A3 1:400,000 Date Created Apr 2024

Figure Number **7.1** Rev **P01**

I:\CorplukCloud\UK-gis\01\data\70107275 - Xlinks\13_GSS\132_GIS\ArcGIS\Projects\PEIR\Projects\Cultural Heritage and Marine Archaeology\794-PLN-ESH-00051 - CHMA - 7 - Historical Environment Features 1-5.aprx







Esri, HERE, Garmin, FAO, NOAA, USGS

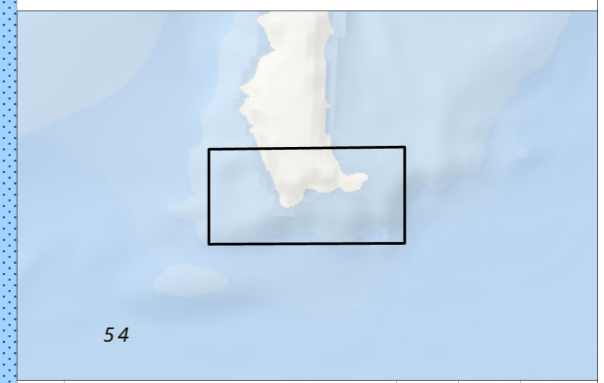
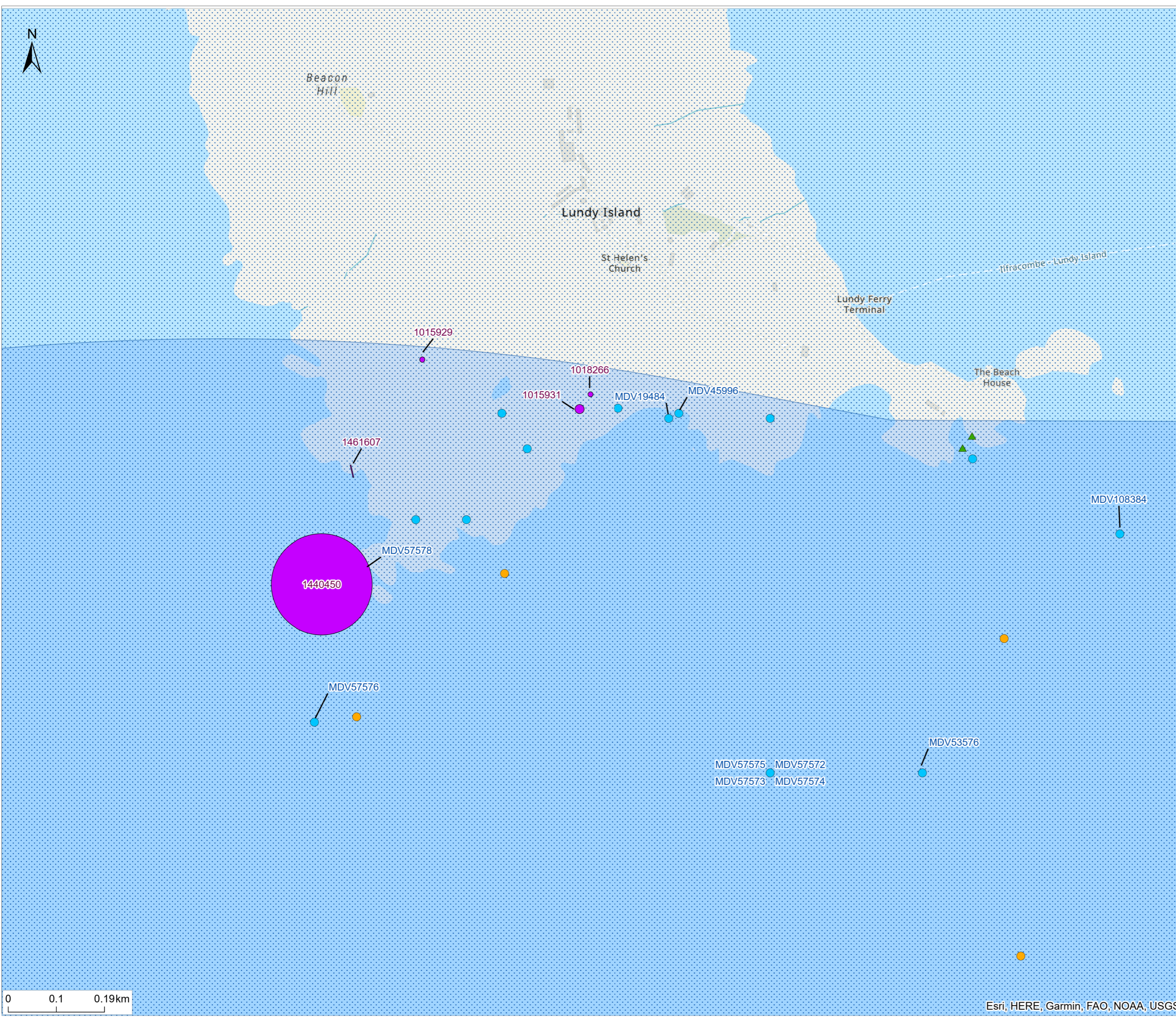
\\CorplukCloud\UK-gis\01\data\70107275 - Xlinks\13_GSS\132_GIS\ArcGIS\Pro\Projects\PEIR\Projects\Cultural Heritage and Marine Archaeology\794-PLN-ESH-00057 - CHMA - 7 - Historical Environment Features 1-5.aprx



Notes
1. This plan is scaled at paper size A3. If received electronically it is the recipient's responsibility to print to the correct scale. Only written dimensions should be used.

Legend

-  5km Study Area
-  UKHO - Wrecks or Obstructions
-  Listed Buildings
-  DHER Monument (point)
-  Scheduled Monument
-  Heritage Coasts



Rev	Description	By	CB	Date
P01	Final	CE	JC	04/04/24



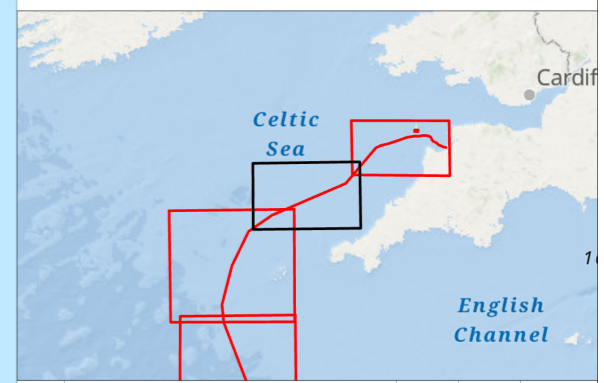
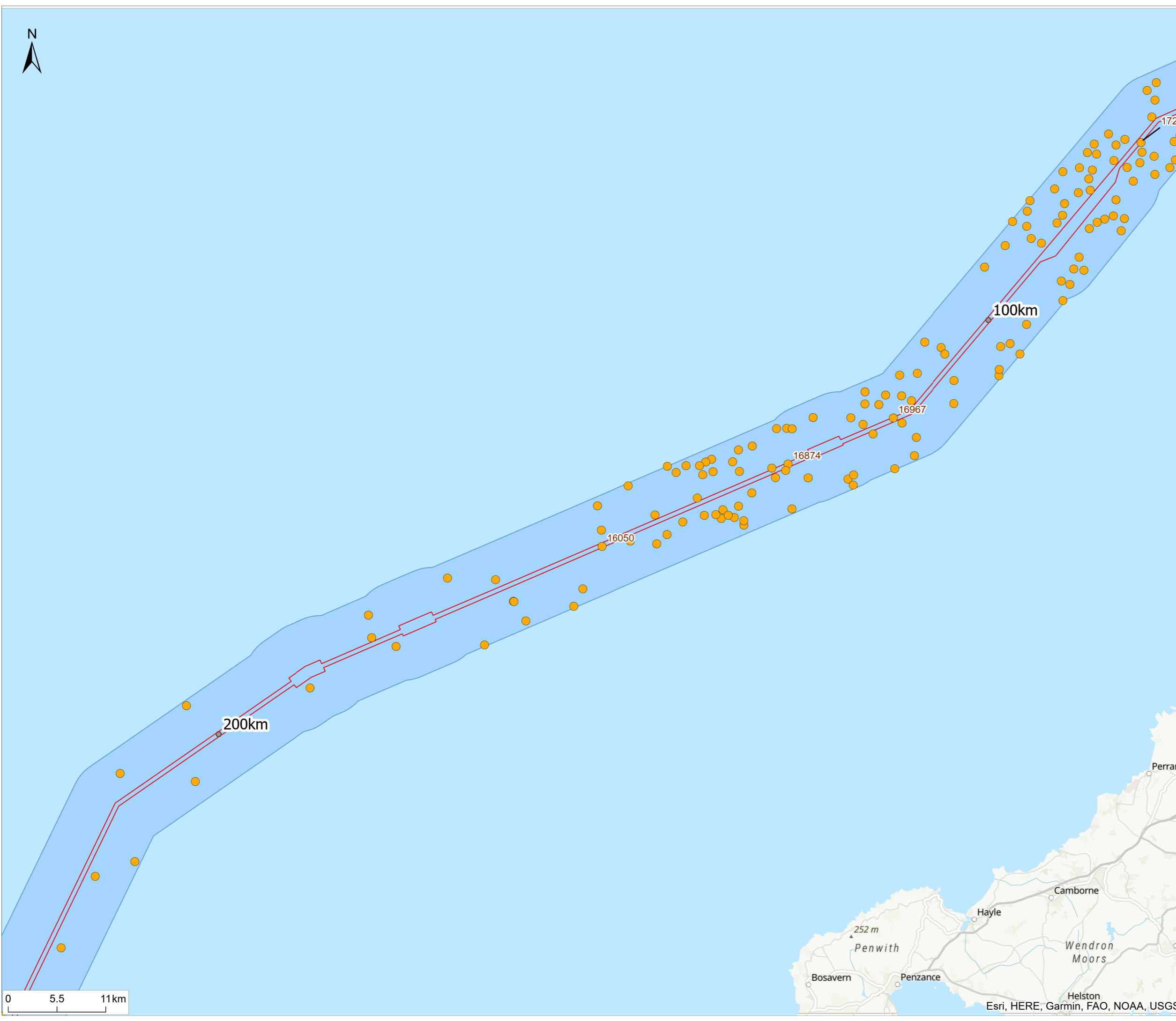
Client	Xlinks 1 Limited		
Project	Xlinks Morocco-UK Power Project		
Title	Historical Environment Features map Sheet 2 of 5		
Status	Drawn By	PM/Checked By	
FINAL	CE	TM	
Project Number	Scale @ A3	Date Created	
794-PLN-ESH-00051	1:7,000	Apr 2024	
Figure Number		Rev	
7.1		P01	

Esri, HERE, Garmin, FAO, NOAA, USGS



Notes
 1. This plan is scaled at paper size A3. If received electronically it is the recipient's responsibility to print to the correct scale. Only written dimensions should be used.

- Legend**
-  Xlinks UK Offshore Cable Corridor
 -  5km Study Area
 -  UKHO - Wrecks or Obstructions



Rev	Description	By	CB	Date
P01	Final	CE	JC	04/04/24



Client Xlinks 1 Limited

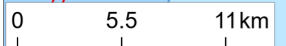
Project Xlinks Morocco-UK Power Project

Title Historical Environment Features map
Sheet 3 of 5

Status **FINAL** Drawn By CE PM/Checked By TM

Project Number 794-PLN-ESH-00051 Scale @ A3 1:400,000 Date Created Apr 2024

Figure Number **7.1** Rev **P01**



I:\CorplukCloud\UK-gis\01\data\70107275 - Xlinks13_GSS\132_GIS\ArcGIS\Pro\Projects\PEIR Projects\Cultural Heritage and Marine Archaeology\794-PLN-ESH-00051 - CHMA - 7 - Historical Environment Features 1-5.aprx

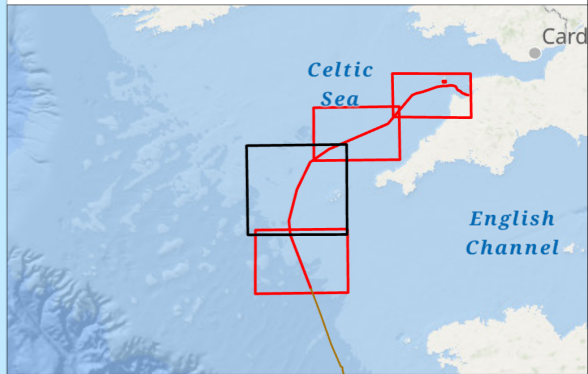
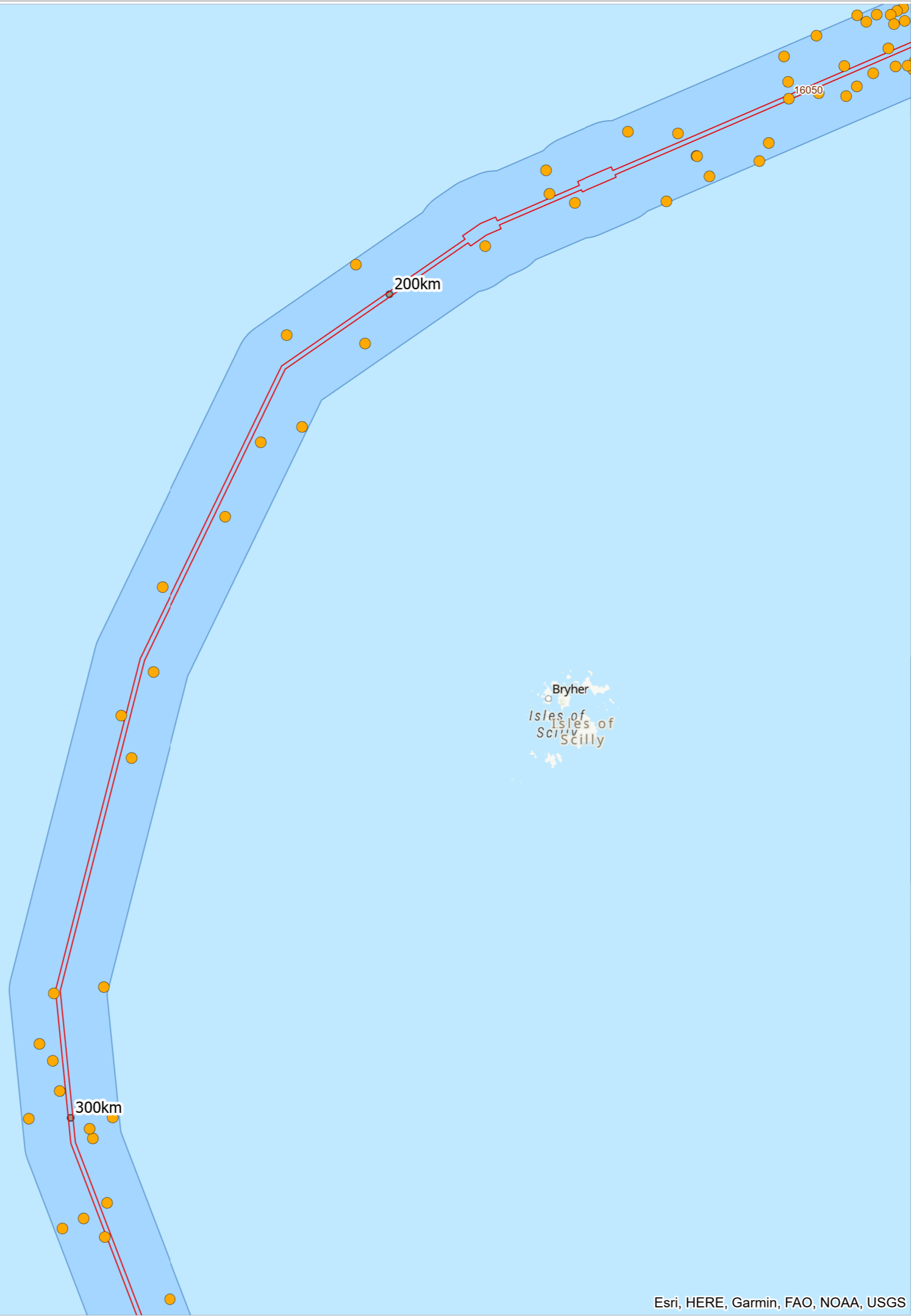
Esri, HERE, Garmin, FAO, NOAA, USGS



Notes
 1. This plan is scaled at paper size A3. If received electronically it is the recipient's responsibility to print to the correct scale. Only written dimensions should be used.

Legend

- Xlinks UK Offshore Cable Corridor
- 5km Study Area
- UKHO - Wrecks or Obstructions



Rev	Description	By	CB	Date
P01	Final	CE	JC	04/04/24

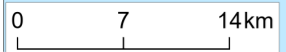


Client Xlinks 1 Limited

Project Xlinks Morocco-UK Power Project

Title Historical Environment Features map
Sheet 4 of 5

Status	Drawn By	PM/Checked By
FINAL	CE	TM
Project Number	Scale @ A3	Date Created
794-PLN-ESH-00051	1:500,000	Apr 2024
Figure Number		Rev
7.1		P01



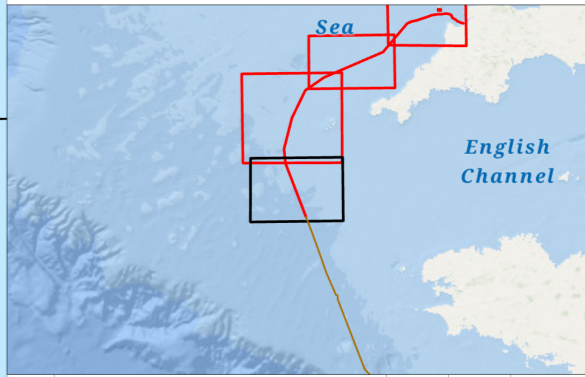
\\CorplukCloud\UK-gis\01\data\70107275 - Xlinks13_ GSS\132_ GIS\ArcGIS\Pro\Projects\PEIR Projects\Cultural Heritage and Marine Archaeology\794-PLN-ESH-00057 - CHMA - 7 - Historical Environment Features 1-5.aprx



Notes
1. This plan is scaled at paper size A3. If received electronically it is the recipient's responsibility to print to the correct scale. Only written dimensions should be used.

Legend

- Xlinks UK Offshore Cable Corridor
- Indicative Cable Centreline
- UK Exclusive Economic Zone (EEZ)
- 5km Study Area
- UKHO - Wrecks or Obstructions



Rev	Description	By	CB	Date
P01	Final	CE	JC	04/04/24



Client **Xlinks 1 Limited**

Project **Xlinks Morocco-UK Power Project**

Title **Historical Environment Features map
Sheet 5 of 5**

Status	Drawn By	PM/Checked By
FINAL	CE	TM
Project Number	Scale @ A3	Date Created
794-PLN-ESH-00051	1:500,000	Apr 2024
Figure Number		Rev
7.1		P01

