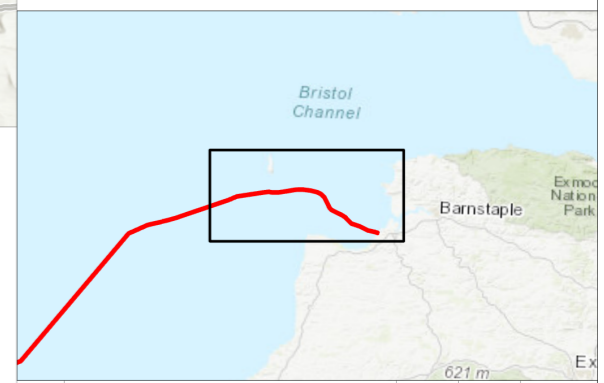
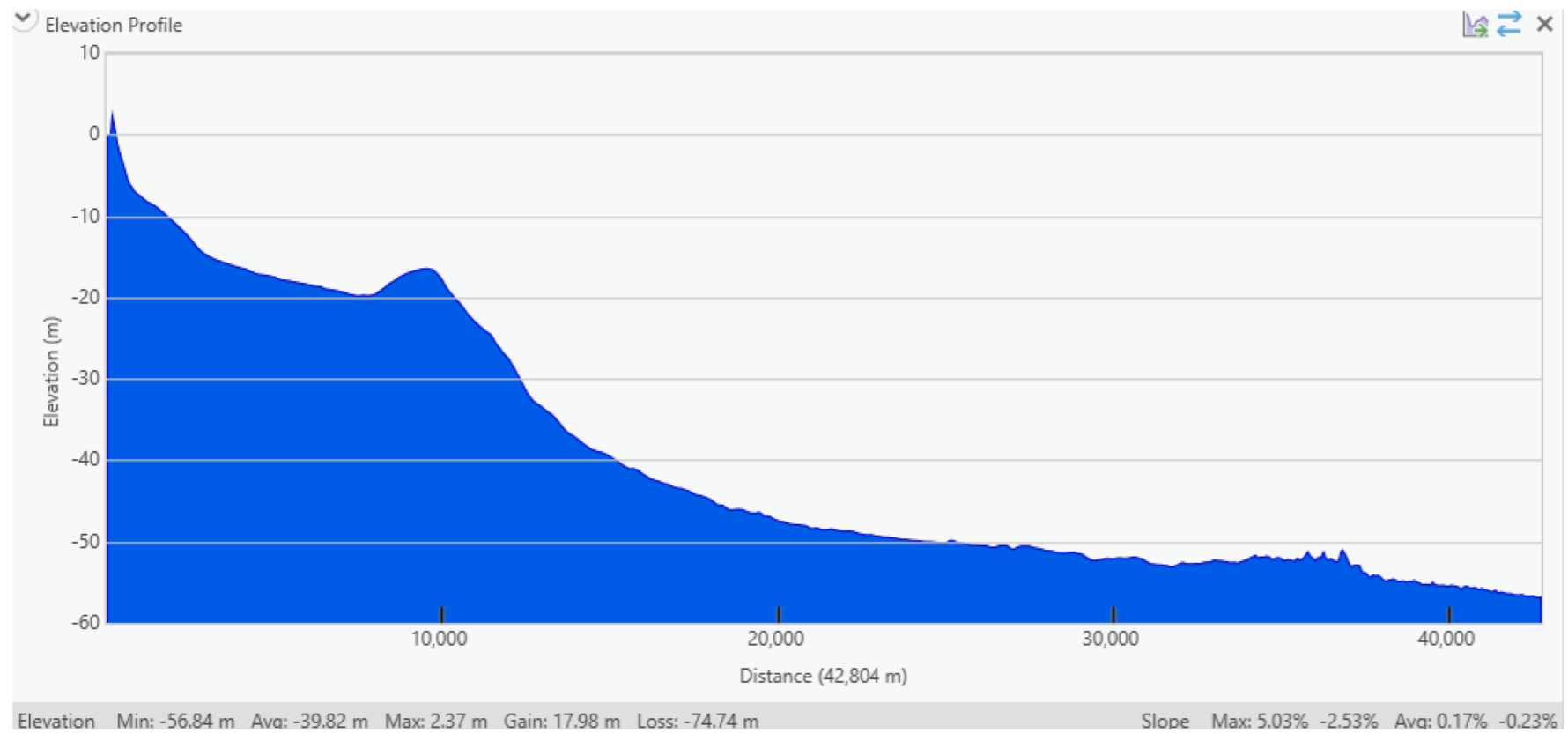


Notes
1. This plan is scaled at paper size A3. If received electronically it is the recipient's responsibility to print to the correct scale. Only written dimensions should be used.

- Legend**
- XLinks UK Offshore Cable Corridor
 - Indicative Cable Centreline
 - UK Exclusive Economic Zone (EEZ)
- Bathymetry (m)**
- Value**
- <5m (Surf Zone)
 - 5-20m (Coastal Waters)
 - >20m (Deep Water)



Landfall



End of Transect

Rev	Description	By	CB	Date
P01	Final	CE/CB	SB	04/04/24

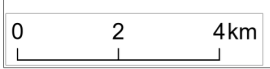


Client Xlinks 1 Limited

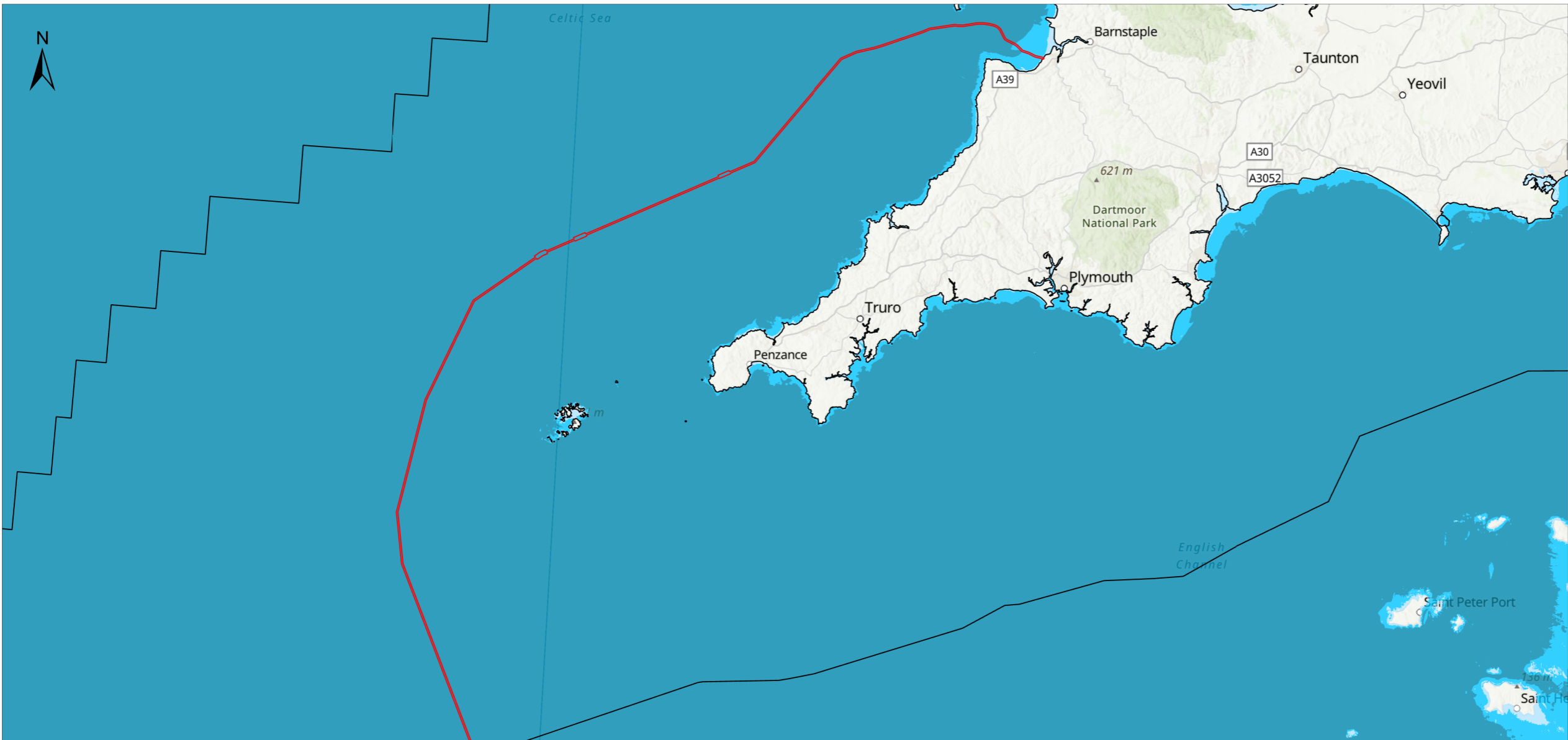
Project Xlinks Morocco-UK Power Project

Title Bathymetry Sheet 1 of 2

Status FINAL	Drawn By CB	PM/Checked By TM
Project Number 794-PLN-ESH-00083	Scale @ A3 1:150,000	Date Created Apr 2024
Figure Number 8.4		Rev P01



\\Corp\ukCloud\UK-GIS01\data\70107275 - Xlinks\13 - GIS\ArcGIS\Pro\Projects\PEIR Projects\Physical Processes\794-PLN-ESH-00076 - PP - 8 - Bathymetry.aprx



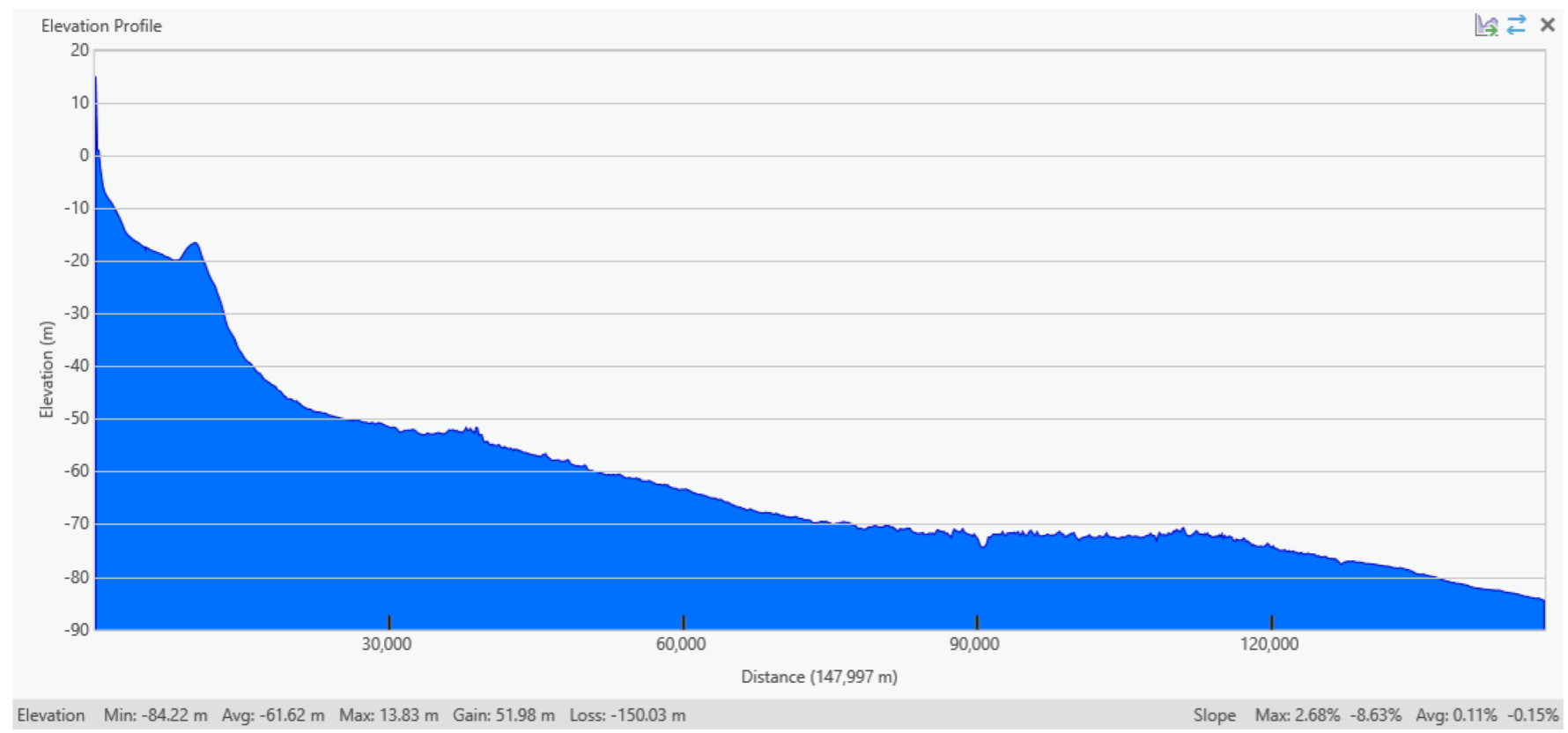
Notes
 1. This plan is scaled at paper size A3. If received electronically it is the recipients responsibility to print to the correct scale. Only written dimensions should be used.

- Legend**
- XLinks UK Offshore Cable Corridor
 - Indicative Cable Centreline
 - UK Exclusive Economic Zone (EEZ)
- Bathymetry (m)**
- Value**
- <5m (Surf Zone)
 - 5-20m (Coastal Waters)
 - >20m (Deep Water)

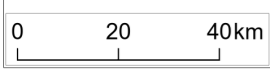


Rev	Description	By	CB	Date
P01	Final	CE/CB	SB	04/04/24

Landfall →



← End of Transect



Esri, HERE, Garmin, FAO, NOAA, USGS



Client Xlinks 1 Limited

Project Xlinks Morocco-UK Power Project

Title Bathymetry Sheet 2 of 2

Status **FINAL** Drawn By **CB** PM/Checked By **TM**

Project Number 794-PLN-ESH-00083 Scale @ A3 1:1,500,000 Date Created Apr 2024

Figure Number **8.4** Rev **P01**

\\Corp\ukCloud\UK-GIS01\data\70107275 - Xlinks\13 - GSS\132 - GIS\ArcGIS\Pro\Projects\Physical Processes\794-PLN-ESH-00076 - PP - 8 - Bathymetry.aprx