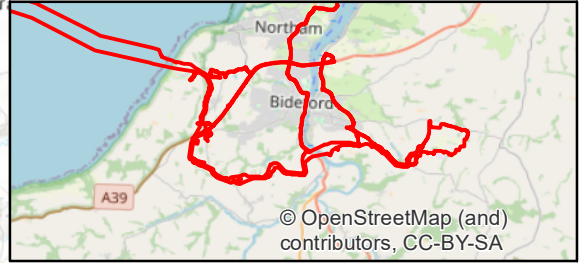


Notes
 1. This plan is scaled at paper size A3. If received electronically it is the recipient's responsibility to print to the correct scale. Only written dimensions should be used.

Legend

- Proposed Development Draft Order Limits
- Converter Site
- Alverdiscott Substation Connection Development
- 2km Study Area
- 5km Study Area
- SAC
- SSSI
- LNR
- MCZ
- Ancient woodland



Rev	Description	By	CB	Date



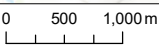
Client Xlinks 1 Limited
 Project Xlinks Morocco-UK Power Project
 Title Study Area, Order Limits and Statutory Designated Sites

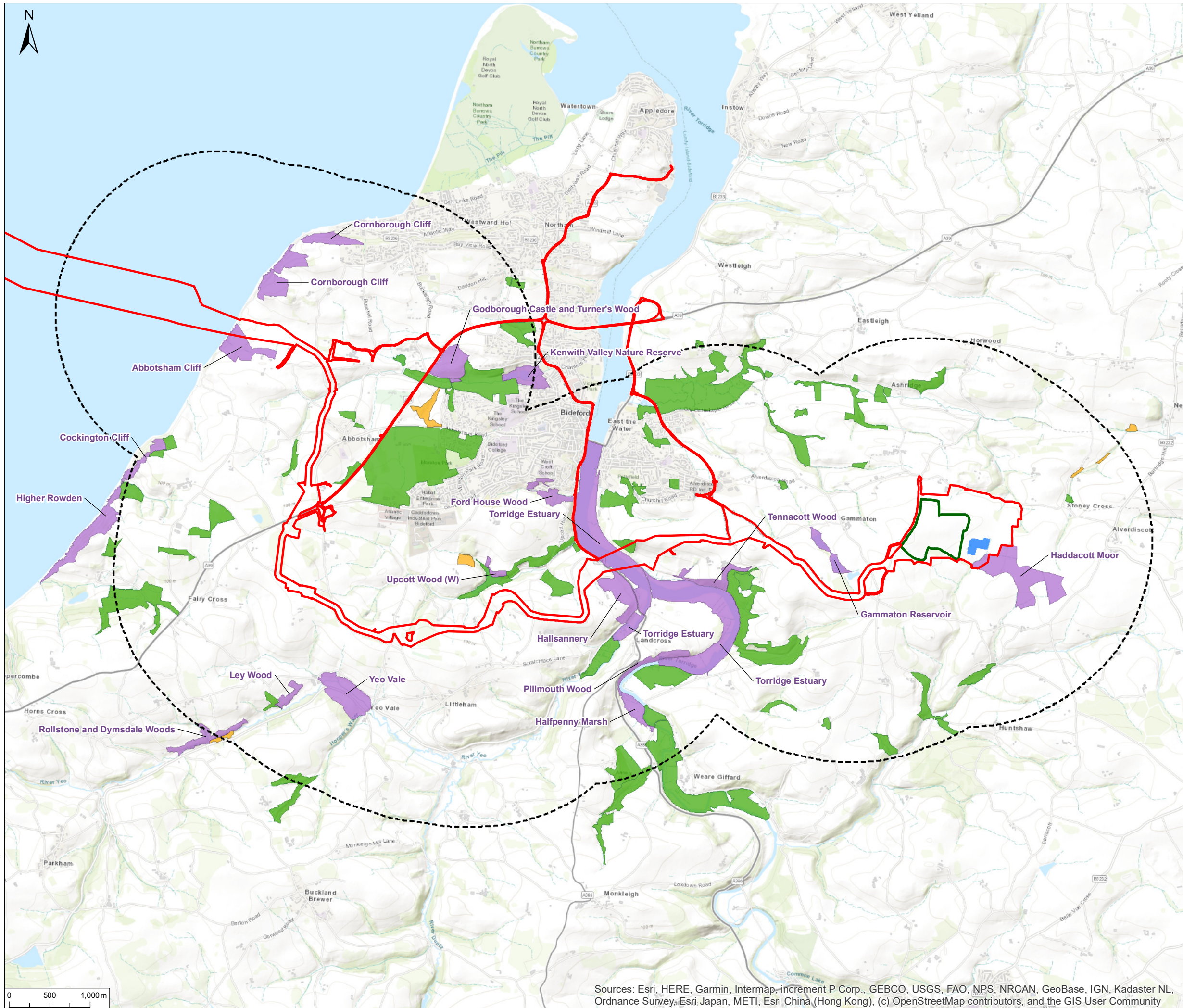
Status	Drawn By	PM/Checked By
FINAL	MP	BC
Project Number	Scale @ A3	Date Created
794-PLN-ESH-00030	1:65,000	April 2024
Figure Number		Rev
1.1a		02

www.xlinks.co

Sources: Esri, HERE, Garmin, Intermap, increment P Corp., GEBCO, USGS, FAO, NPS, NRCAN, GeoBase, IGN, Kadaster NL, Ordnance Survey, Esri Japan, METI, Esri China (Hong Kong), (c) OpenStreetMap contributors, and the GIS User Community

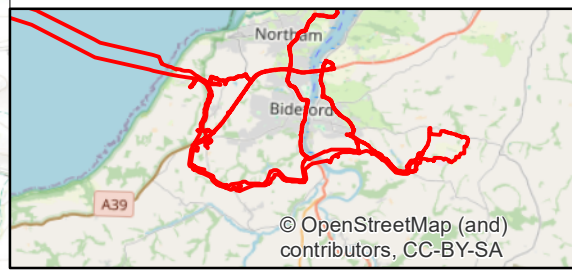
O:\11809 Xlinks Alverdiscott\Tech\Drawings\11809-0112-02.mxd





Notes
 1. This plan is scaled at paper size A3. If received electronically it is the recipient's responsibility to print to the correct scale. Only written dimensions should be used.

- Legend**
- Proposed Development Draft Order Limits
 - Converter Site
 - Alverdiscott Substation Connection Development
 - 2km Study Area
 - County wildlife site
 - Unconfirmed wildlife site
 - Other sites of wildlife interest



Rev	Description	By	CB	Date



Client Xlinks 1 Limited
 Project Xlinks Morocco-UK Power Project
 Title Study Area, Order Limits and Non-statutory Designated Sites

Status	Drawn By	PM/Checked By
FINAL	MP	BC
Project Number	Scale @ A3	Date Created
794-PLN-ESH-00030	1:45,000	April 2024
Figure Number		Rev
1.1b		02

www.xlinks.co

Sources: Esri, HERE, Garmin, Intermap, increment P Corp., GEBCO, USGS, FAO, NPS, NRCAN, GeoBase, IGN, Kadaster NL, Ordnance Survey, Esri Japan, METI, Esri China (Hong Kong), (c) OpenStreetMap contributors, and the GIS User Community

O:\11809 Xlinks Alverdiscott\Tech\Drawings\11809-0113-02.mxd